

Medical Premium Windows Touch Panel PC



- Display Size From 15.6" to 21.5"
- Aluminum Die Casting Housing
- Rich & Flexible IO Ports Design
- Magnetic IO Ports Cover For Easy Maintaining
- FCC Part 15 Class B, CE, IEC60601 Medical Certified

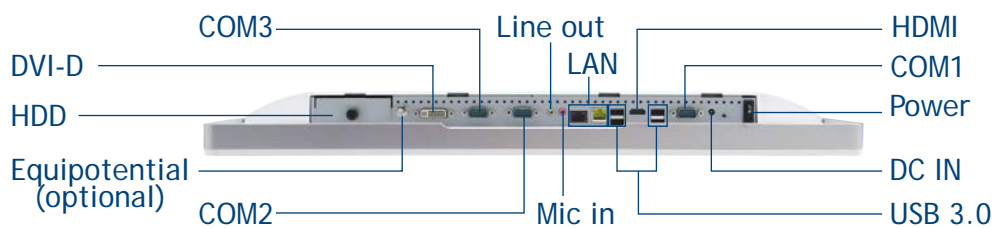
Overview



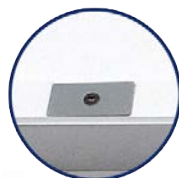
Medical Grade Anti-Bacterial Coating



Aluminum Die Casting Housing



Support TPM & vPro



Magnetic IO port cover



Extension power switch

